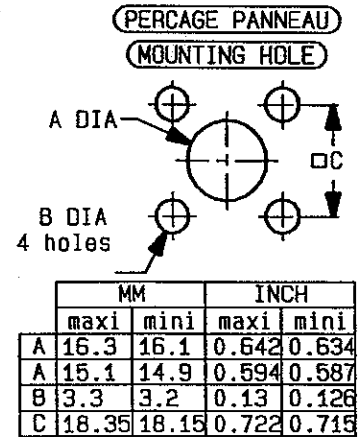
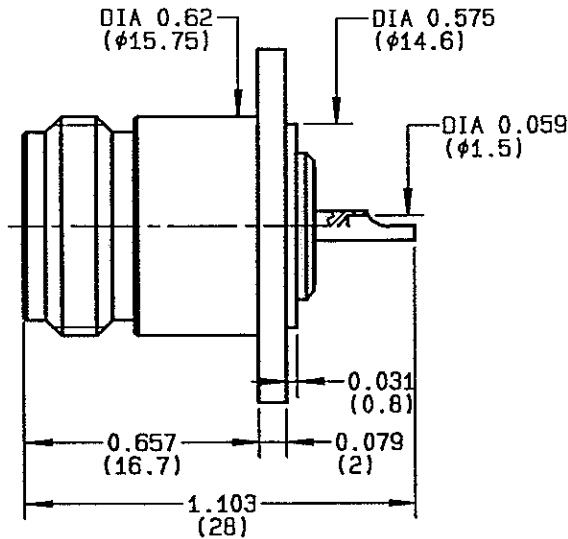
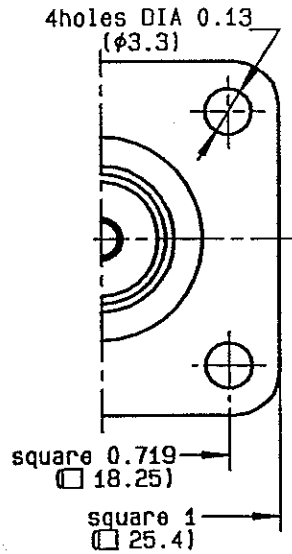


**FLANGE RECEPTACLE**

**R162.403.050**

**SERIES**

**N 75**



NOMINAL IMPEDANCE	75 Ω
FREQUENCY RANGE	0-1.5 GHz
TEMPERATURE RATING	-55/+155 °C
V.S.W.R	NA + x F(GHz)Maxi
RF INSERTION LOSS	NA √F(GHz) dB Maxi
VOLTAGE RATING	850 Veff Maxi
DIELECTRIC WITHSTANDING VOLTAGE	2500 Veff Mini
INSULATION RESISTANCE	5000 MΩMini
HERMETIC SEAL	NA Atm.cm <sup>3</sup> /s
LEAKAGE (pressurized only)	NA
MECHANICAL DURABILITY	500 Cycles
LENGTH	gr

CABLES :

OTHERS CHARACTERISTICS

CABLE RETENTION	NA	N Mini
CENTER CONTACT RETENTION		
Axial force - mating end	27	N Mini
Axial force - opposite end	27	N Mini
Torque	NA	cm.N Mini
RECOMMENDED TORQUES		
Mating	NA	cm.N
Panel nut	NA	cm.N
Clamp nut	NA	cm.N

SPECIFICATION

CONNECTOR PARTS:

MATERIALS

FINISH

(all values are given in micrometers)

BODY	BRASS
OUTER CONTACT	
CENTER CONTACT	BERYLLIUM COPPER
INSULATOR	SILICONE RUBBER
GASKET	
OTHERS PIECES	

BLACK-CHROMIUM 0.2 OVER NICKEL 2  
GOLD 0.5 OVER NICKEL 2  
-  
-

ISSUE	CREATION DATE	FILE PART-NUMBER
9727C01	27-JUL-83	



The information given here is subject to change without notice. Design changes may be in order to improve the product.

Connect to the future